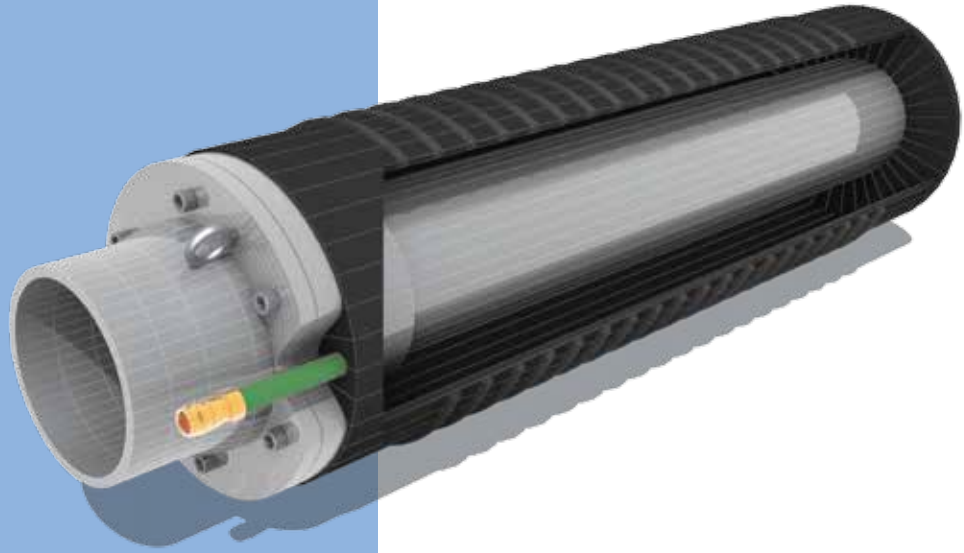
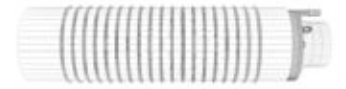
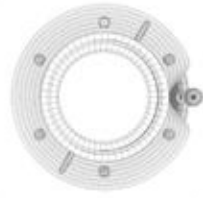


MULTI-SIZE
**PLUGS WITH
 LARGER BYPASS
 PLUGSY VP**

1.10



Savatech multi-size plugs with larger bypass PLUGSY VP cover range from 100 mm up to 1800 mm. The replaceable rubber sleeve is reinforced with Kevlar cord and assure safe and simple handling. The by-pass is made of PHP hose and equipped with a threaded aluminium flange on the front side, which is easily replaceable to adjust the flow to actual requirements.

Use of plugs for testing tightness with air or water is also possible.



BYPASS DIAMETER
 UP TO 8 INCHES



REPLACABLE
 RUBBER
 SLEEVE AND
 BYPASS FLANGE



NON CORRODIVE
 METAL PARTS



PLUGSY VP - BYPASS PLUG

Part number	Nominal size EU	Size usage range		Required inflation pressure (bar)	Deflated plug		Product weight (kg)	Eye bolt	Inflation valve	Bypass diameter (female)
		Min. dia. (mm)	Max. dia. (mm)		M thread	Thread size				
516942	100-150	98	150	2.5	88	370	2.2	M 6	Not removable	2"
516943	150-250	148	250	2	136	520	4.6	M 6	Not removable	3" (2")
516944	200-300	198	300	2	186	550	7.6	M 6	Not removable	4" (2")
60967	150-300	150	300	1.5	142	540	3.6	M 8	-	2"
60968	200-400	200	400	1.5	192	600	6.1	M 8	-	4" (2")
533539	300-525	300	525	1.5	272	630	11.7	M 10	R 1/4"	6" (4", 2")
60970	350-600	350	600	1.5	322	830	17	M 10	R 1/4"	6" (4", 2")
60971	500-1000	500	1000	1.5	472	1150	37.5	M 10	R 1/4"	8" (6", 4", 2")
535873	600-1200	600	1200	1.5	574	1450	65.1	M 12	2 x R 3/8"	6"
535874	600-1200	600	1200	1.5	574	1450	70.5	M 12	2 x R 3/8"	8"
535876	750-1500	750	1500	1	600	2300	79	M 12	2 x R 1/2"	6"
535878	750-1500	750	1500	1	600	2300	83	M 12	2 x R 1/2"	8"
535879	800-1800	800	1800	1	800	3000	121	M 12	2 x R 1/2"	6"
535880	800-1800	800	1800	1	800	3000	125	M 12	2 x R 1/2"	8"

BACK PRESSURE - measured in dry iron pipe (bar)

PLUG's size	Pipe Diameter (mm)												
	100	150	200	250	300	350	400	500	600	700	800	900	1000
100-150	1	0.8											
150-250		1	0.8	0.6									
200-300			1	0.8	0.6								
150-300		1	0.8	0.7	0.6								
200-400			1.1	0.9	0.7	0.6	0.6						
300-525					1	0.9	0.7	0.5					
350-600						0.9	0.8	0.7	0.6				
500-1000								1.1	0.9	0.8	0.7	0.6	0.6

BACK PRESSURE - measured in dry iron pipe (bar)

PLUG's size	Pipe Diameter (mm)									
	600	800	1000	1200	1300	1400	1500	1600	1700	1800
600-1200	1	0.8	0.6	0.5						
750-1500		1	0.9	0.7	0.6	0.5	0.4			
800-1800		1	1	0.8	0.8	0.7	0.6	0.5	0.4	0.4

